

FOTILE

FOTILE *EPS* Cooktops Efficient | Powerful | Safe

Professional Technologies
Ensure Satisfying Performance

Uniform Heat Suitable for Pans and Pots

U5 Uniform Injection Chamber
40° Flame angle



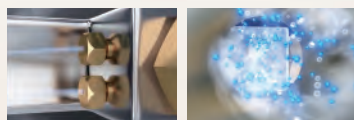
Powerful and Stable Flame

Premixed Gas Reservoir
High and stable gas pressure



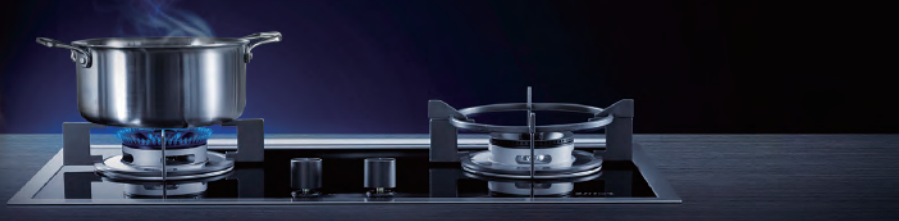
Time, Gas and Money Saving

Patented Jet Collision
Technology
Heating efficiency >60%



12 Safety Guarantees

Equipped with a Flame Failure
Detection Device



FOTILE

FOTILE *EPS* Cooktops Efficient | Powerful | Safe



Model	GAG86309	GAS78307	GAG76202
Certification	ETL	ETL	ETL
Product Dimensions(in)	33 7/8 X 19 11/16	30 3/4 X 17 3/4	29 15/16 X 17 9/16
Built-in Dimensions(in)	32 3/16 X 18 1/8	27 7/8 X 15 5/16	27 7/8 X 15 5/16
Number of Burners	3	3	2
Panel Material	Tempered Glass	Stainless Steel	Tempered Glass
Grate Material	Cast Iron	Cast Iron	Cast Iron
Heating Load(BTU)	L/R: 14800 M: 5800	L/R: 14800 M: 5800	L/R: 14800
Heating Efficiency	Heating Efficiency>60% Efficient Heating Load is nearly 9000BTU, 10% higher than average		

Boil 1gal of water

FOTILE VS Average

Saves Gas by at least **14%**

Saves Time by at least **12.5%**

* For better heating performance, please make sure that the cabinet under the cooktop has fresh air circulation and is not completely sealed.

Warranty:

PARTS 5-YEAR(LIMITED)
LABOR 1-YEAR

Toll Free: 888-315-0366
Address: 6 Campus Dr, Suite 210,
Parsippany, NJ 07054
Website: us.fotileglobal.com
Service Mail: serviceusa@fotile.com



WeChat Service



YouTube



fotile_usa